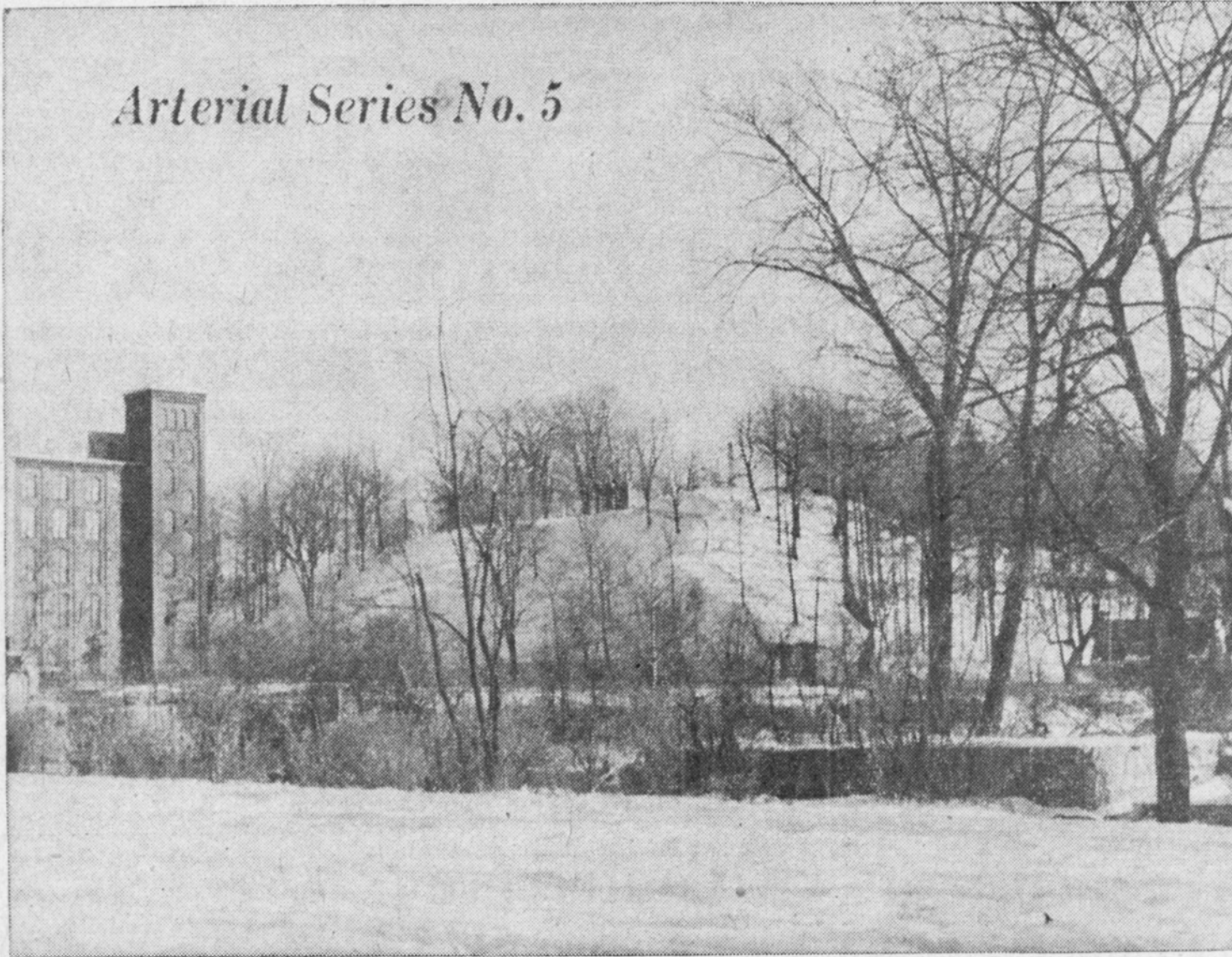


Arterial Series No. 5



SOUTHBOUND CHURCH ST. TRAFFIC COMES ACROSS HERE — The building at the left is one of the Grossman Industrial Properties on Church St. As proposed, southbound arterial traffic would change here from Church St., crossing the open space south of the former Bigelow-Sanford mill, continuing across Chuctanunda Creek on a new structure and entering what is now Greene Park, opposite Greene St. The photo was taken from the park, looking toward Green Hill Cemetery. In addition to providing for traffic flow south on Market St., the crossing link will permit westerly progress over Greene St.