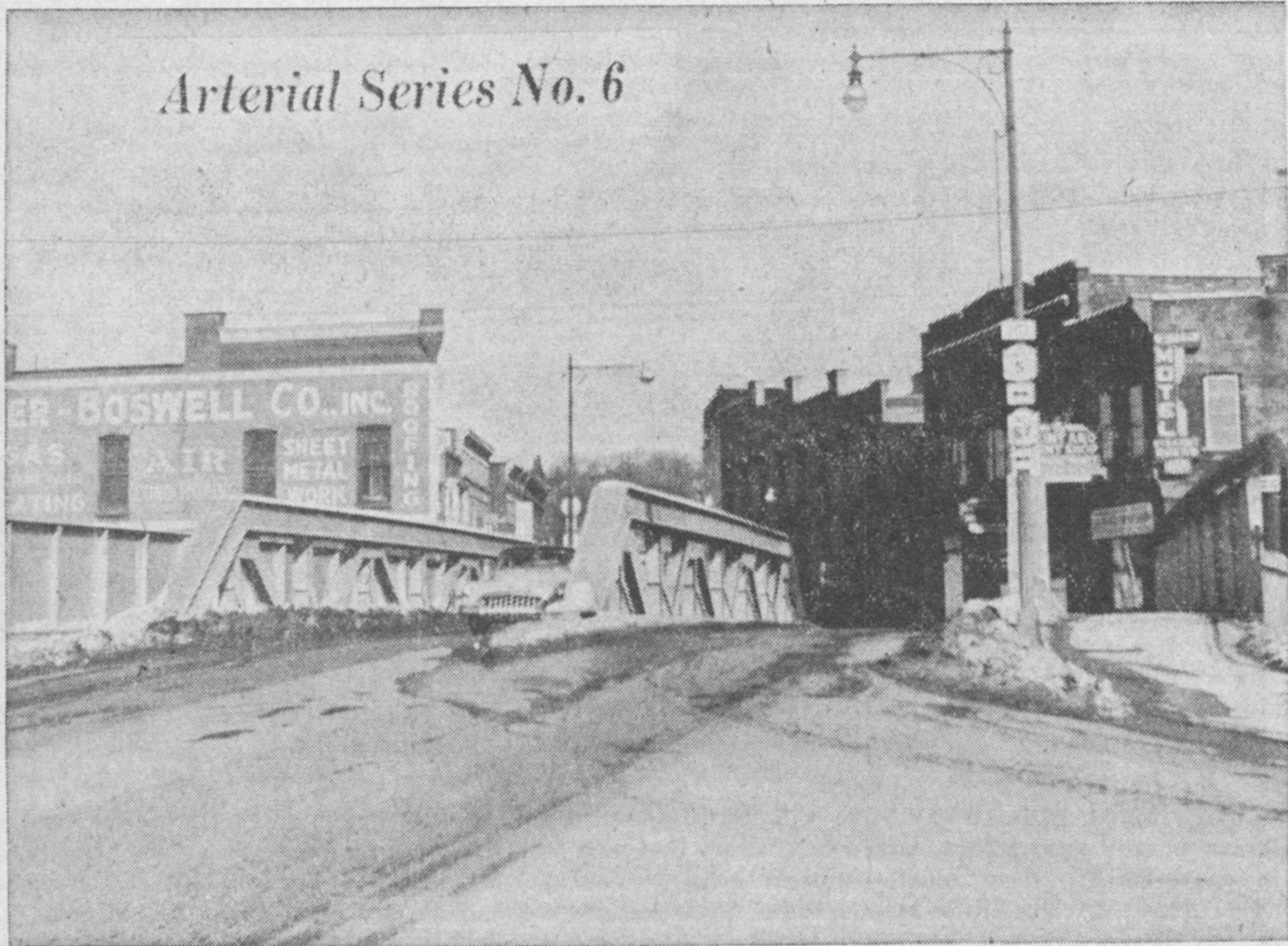


Arterial Series No. 6



OLD RAILROAD BRIDGE WOULD BE MODERNIZED BY STATE—Among the current arterial proposals is modernization by the state of this Bridge St. railroad crossing, built in 1915 when horses and wagons had no difficulty in negotiating what is now considered a sharp turn. In today's traffic, the old crossing with its 45 degree bend offers a real hazard and many motorists have come to grief half-way up the center ironwork. The original Bridge St. widening and railroad overhead was constructed 1895-96, shortly before the present New York Central station was erected, 1898-99.