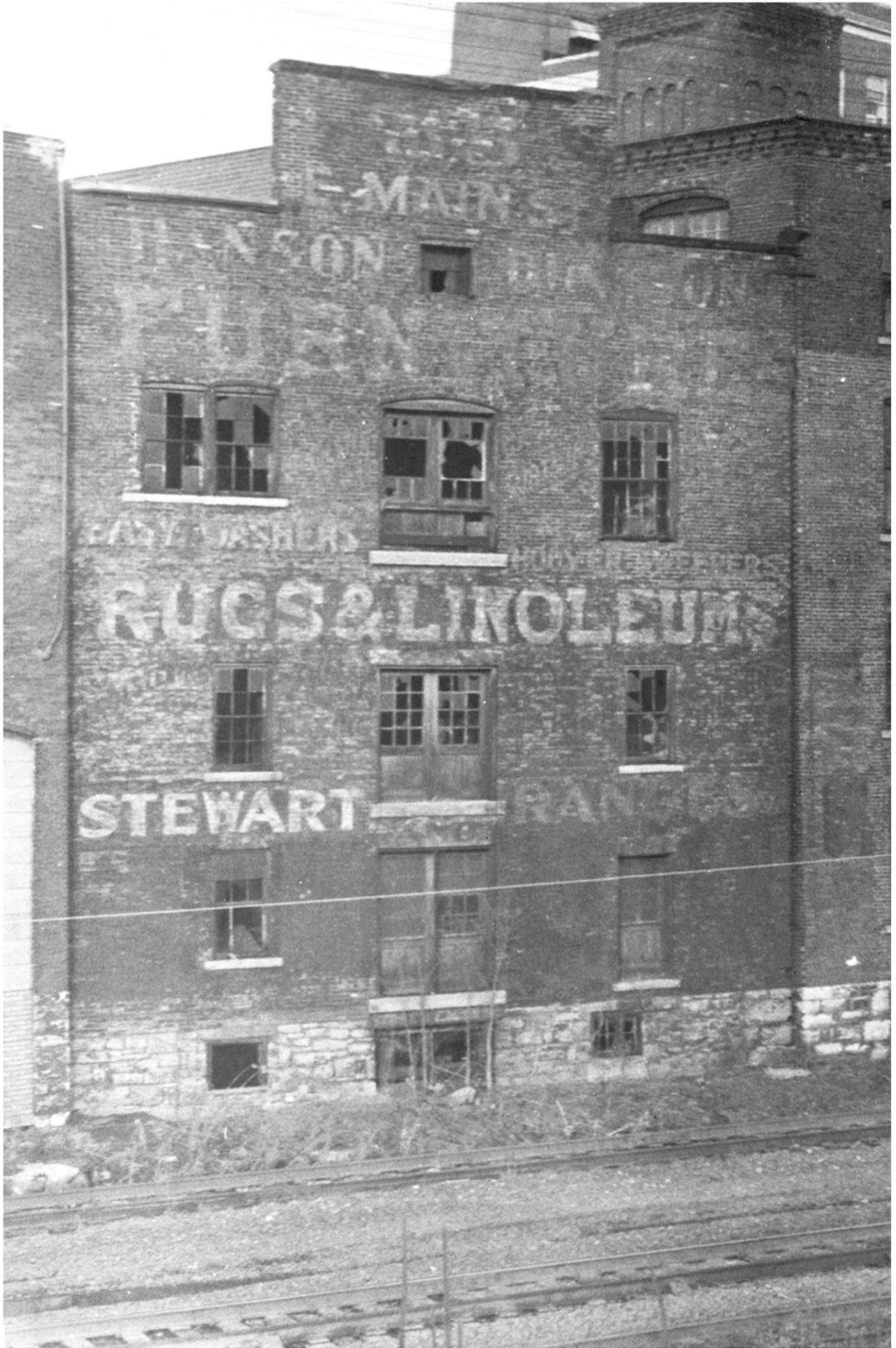


Arterial Scrapbook No. 12



SANDWICHED IN AND FORGOTTEN - Among buildings listed for demolition in the Arterial Program was a three-story brick structure located in the heart of the downtown area but noticed by comparatively few Amsterdamians. As seen from the New York Central tracks, it was the second building east of the overhead crossing and west of the Chalmers button plant. On the north side, entrance to the warehouse was on the lane

leading from Bridge St. to the Harvey Chalmers & Sons plant. Former Mayor Burtiss E. Deal can recall when his father retained storage space here, in the 1890's. Prior to being taken over by the city, the structure was a warehouse of Hanson & Dickson, a furniture firm that was at 35 East Main Street from 1895 to 1940. (Donlon)